

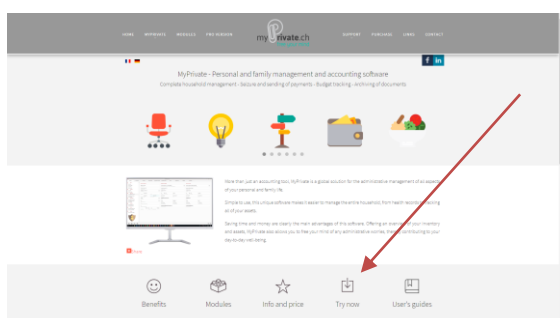
MyPrivate – Download and installation

Table of contents

[Where can MyPrivate be downloaded?]	1
[How to download?]	1
The following steps will take place:	2
[Installation of the software]	2
[Inserting the licence key]	4

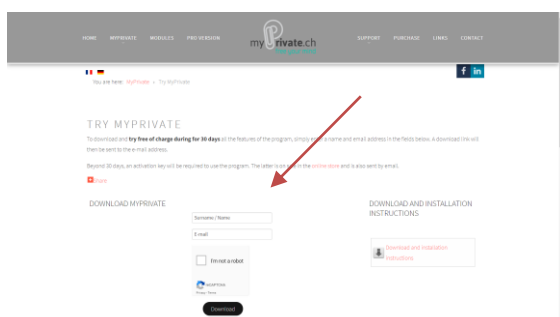
[Where can MyPrivate be downloaded?]

MyPrivate can be downloaded from the [Try now] page of the website www.myprivate.ch



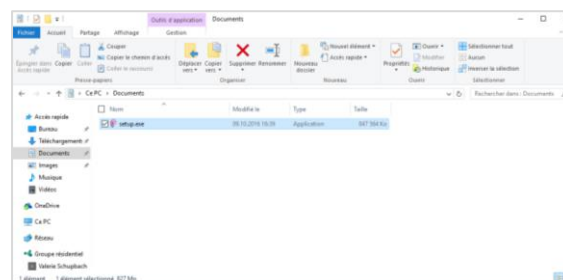
[How to download?]

Complete the fields [Surname / Name] and [E-mail] under "Download MyPrivate" and click on the [Download] button.



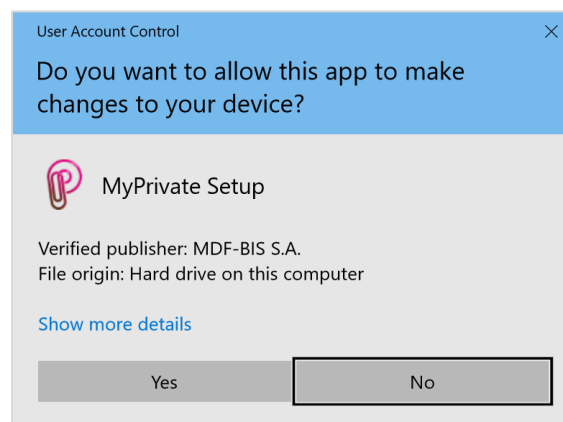
An e-mail with the download link to the [setup.exe] file is automatically sent to the entered e-mail address.

The file will be saved at a location chosen by the user.



Once the [setup.exe] file saved, start the installation of MyPrivate by double-clicking it.

Allow the application to make changes by clicking the [Yes] button.

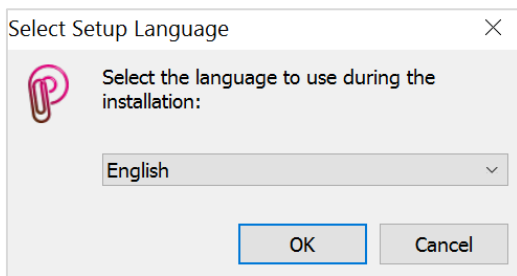


The following steps will take place:

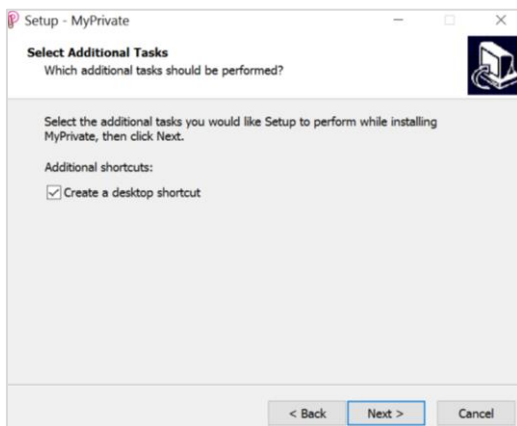
[Installation of the software]

Steps during software installation:

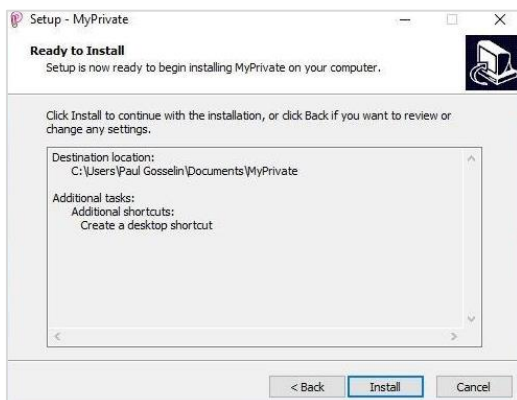
1. Select the language from the drop-down menu, then click [OK].



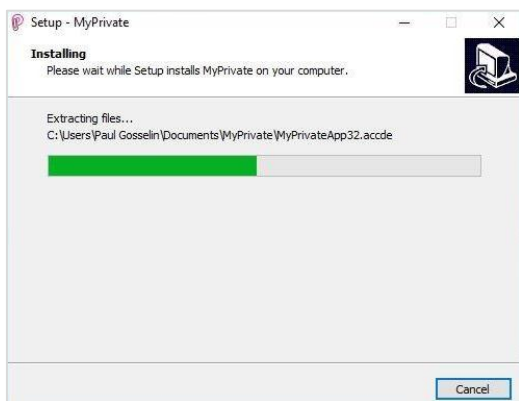
2. Check the [Create a desktop shortcut] checkbox to be able to access the program from the desktop later, click [Next].



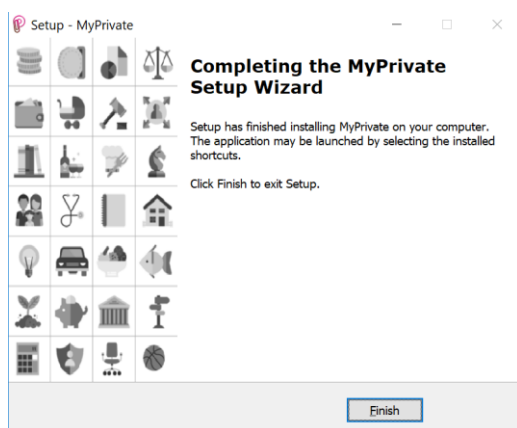
3. To continue the installation, click [Install]



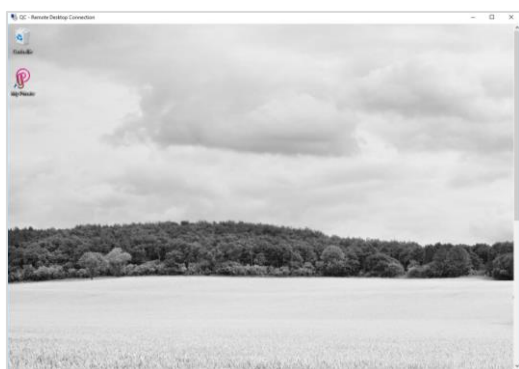
4. The installation continues ...



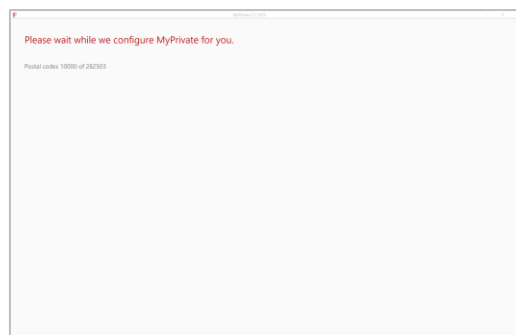
5. The installation of MyPrivate is completed, click [Finish].



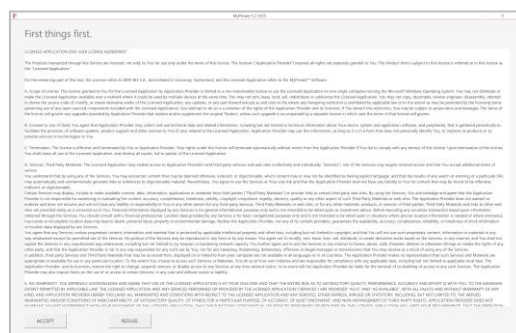
6. When the installation is complete, the MyPrivate icon is available on the desktop.



7. Start MyPrivate by double-clicking its icon. At first boot, MyPrivate will install the postal code databases, wine library, etc.



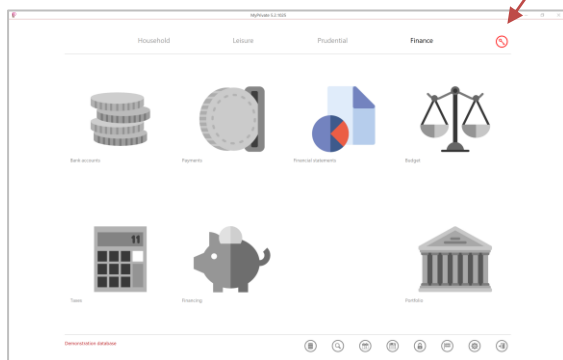
8. Read and, if you agree, accept the conditions of use to finish the installation and start working with MyPrivate.



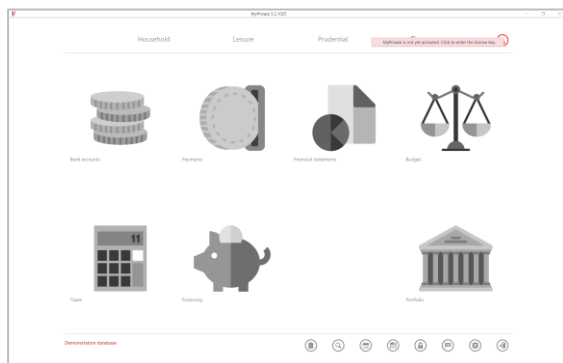
MyPrivate can be used as a trial version for 30 days. Past this period of time, to continue to use MyPrivate, a licence key will be necessary. The key can be purchased from myprivate.ch webshop.

[Inserting the licence key]

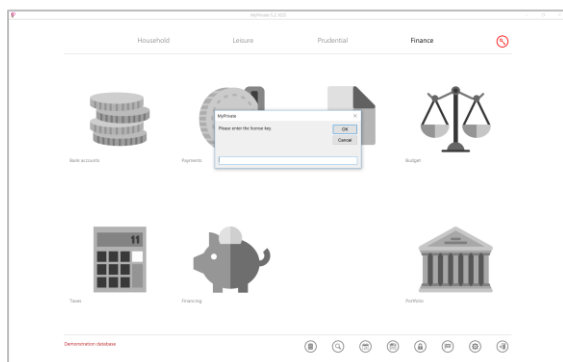
During the 30 trial days, a [Key] icon will appear on the top right corner of the screen.



To enter the licence key, click on the [Key] icon.



A new window will open:



Type the licence key number and click [OK]:

